

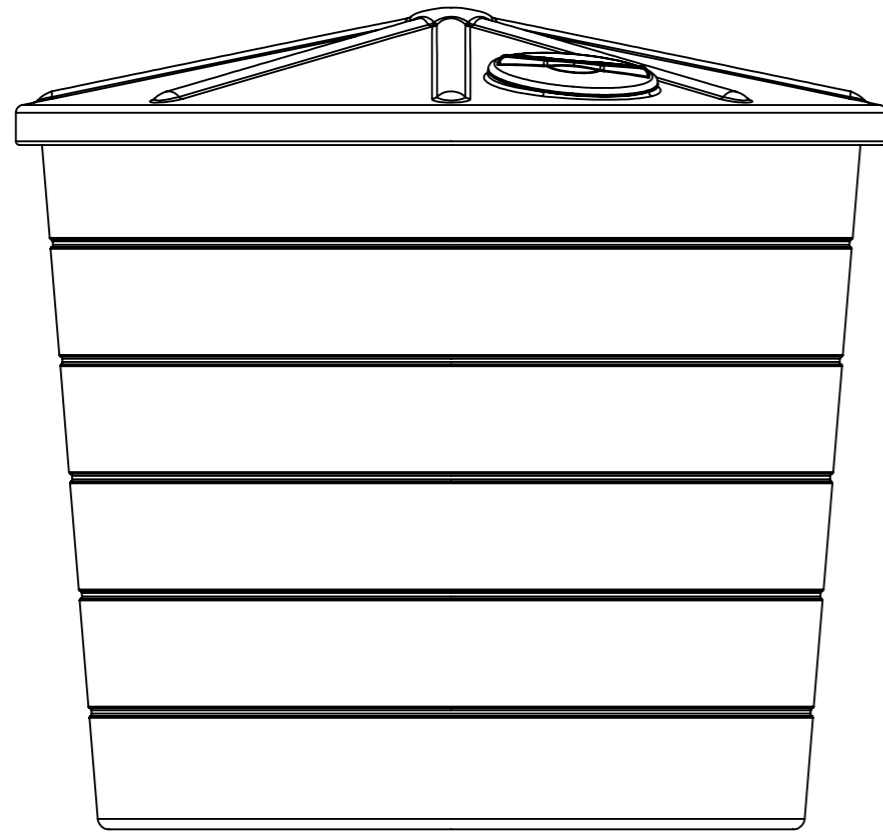
PART TOOLED FROM 3D CAD FILE

2D DRAWING DESCRIBES CRITICAL DIMENSIONS, TOLERANCES AND ALL OTHER DETAILS NOT INCLUDED IN THE 3D CAD FILE

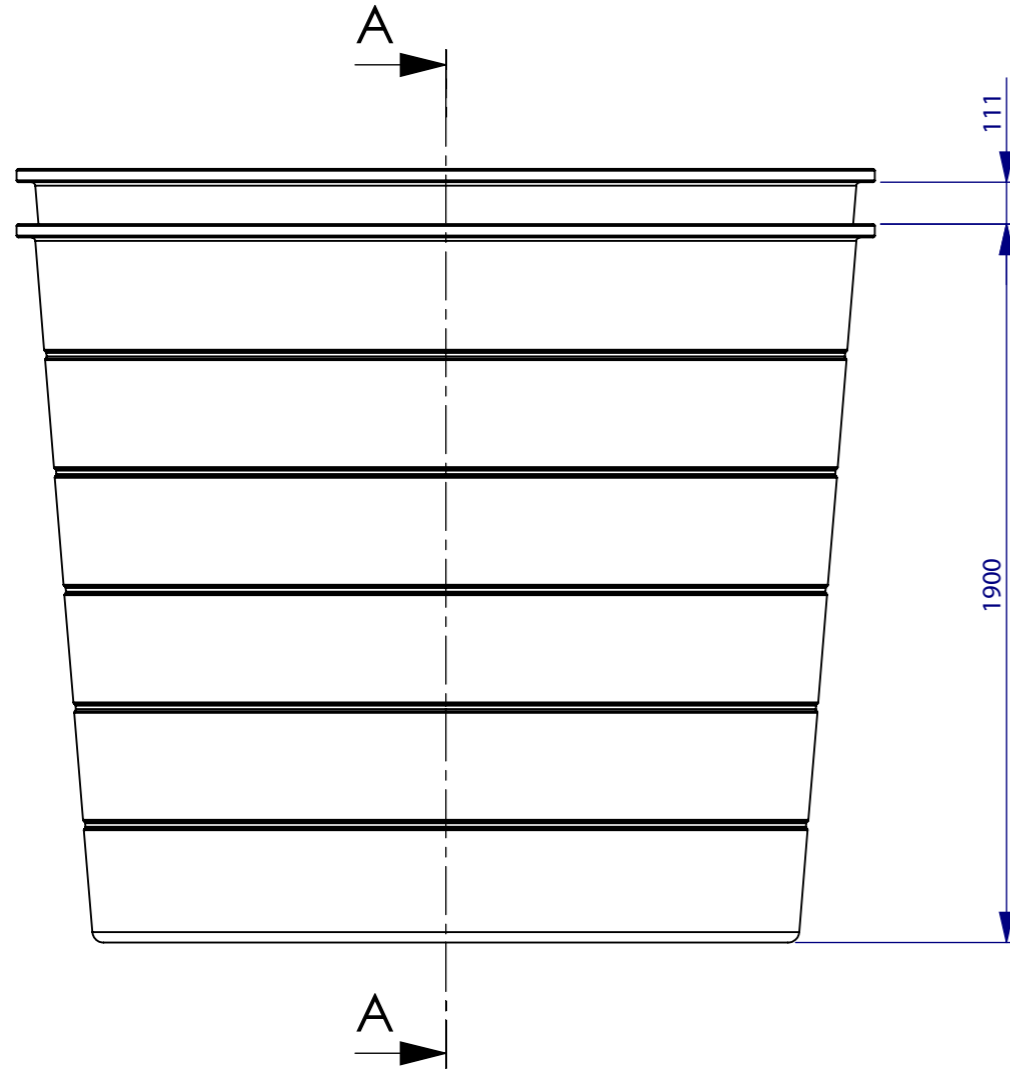
PART MASS PROPERTIES:

TOTAL MASS / WEIGHT:

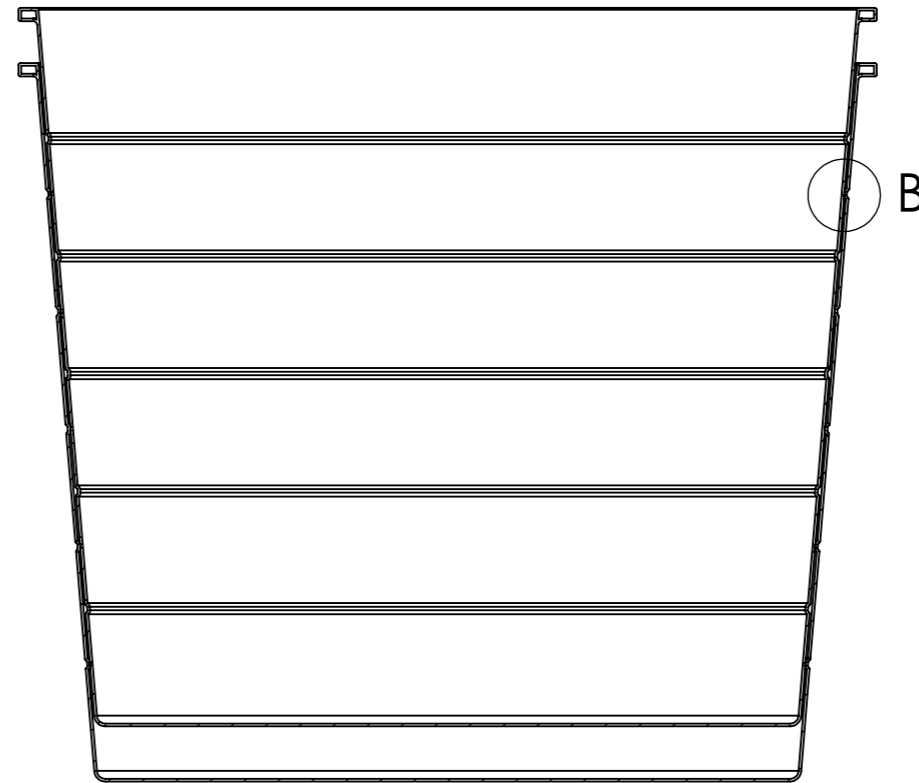
140 Kg



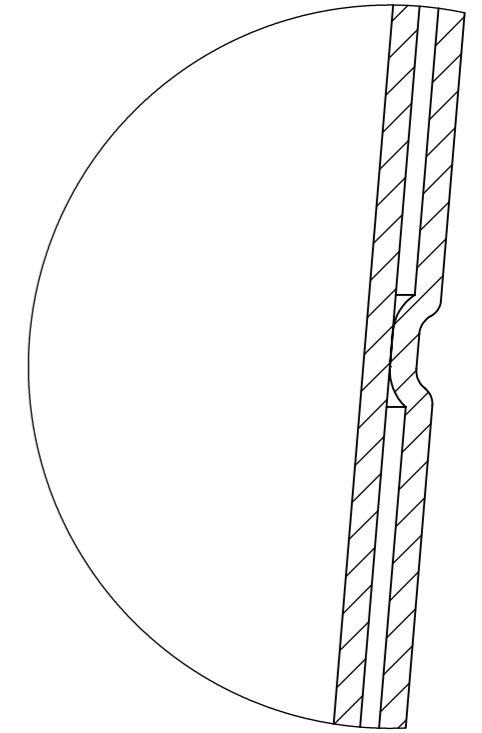
| | | | | | | | | | |
|------|--------------|-------|----------|---|---|--|--|--|--|
| | | | | APPROVED FOR PRODUCTION: | FORMWORKS DESIGN LTD. PO BOX 305 076, TRITON PLAZA, ALBANY, AUCKLAND. PH: +64 9 358 0026 FAX: +64 9 358 0027 | | | | |
| | | | | TESTED: | TOLERANCES: UNLESS OTHERWISE SPECIFIED | | MATERIAL: | TITLE: | |
| | | | | PROTOTYPE: | 0.01mm ± 0.005mm 100.0mm ± 0.2mm | | COLOUR: | 6000L Ribbed Watertank - PR! | |
| | | | | DATE: | 0.1mm ± 0.01mm 1,000.0mm ± 0.5mm | | FINISH: | | |
| | | | | CLIENT SIGNATURE: | 1.0mm ± 0.1mm 10,000.0mm ± 1.0mm | | PROJECT: 6000L Ribbed Watertank | | |
| | | | | FORMWORKS DESIGN LTD. STRONGLY RECOMMENDS THE PROTOTYPING AND TESTING OF ALL PRODUCTS PRIOR TO THE COMMISSIONING OF ANY 'TOOLING' OR 'PRODUCTION'. SHOULD THE CLIENT CHOOSE TO FOREGO THE ASSOCIATED COSTS OF 'PROTOTYPING' AND 'TESTING', THEN FORMWORKS ACCEPTS NO RESPONSIBILITY FOR ANY FUTURE COSTS OF MODIFYING TOOLING OR ASSOCIATED COSTS DUE TO PRODUCT FAILURE. THIS DRAWING AND ANY ASSOCIATED DRAWINGS SHOULD BE 'SIGNED' AND 'DATED' BY THE CLIENT AT THE VARIOUS STAGES DETAILED ABOVE, PRIOR TO THE COMMENCEMENT OF 'TOOLING' AND OR 'PRODUCTION'. | | DRAWING DATE: 18/05/2011 | | DRAWN: | PART NO. SHEET: 1 OF 3 SCALE: 1:50 |
| REV: | DESCRIPTION: | DATE: | CHECKED: | DO NOT SCALE DRAWING ALL DIMENSIONS IN MILLIMETERS | | FILE: 6000L Ribbed Watertank Nested | | DWG NO. R-6000L_WT-0100 FORMAT: A3 | |
| 1 | | 2 | | 3 | 4 | 5 | 6 | 7 | 8 |



Nested View

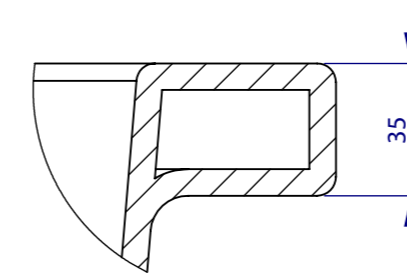
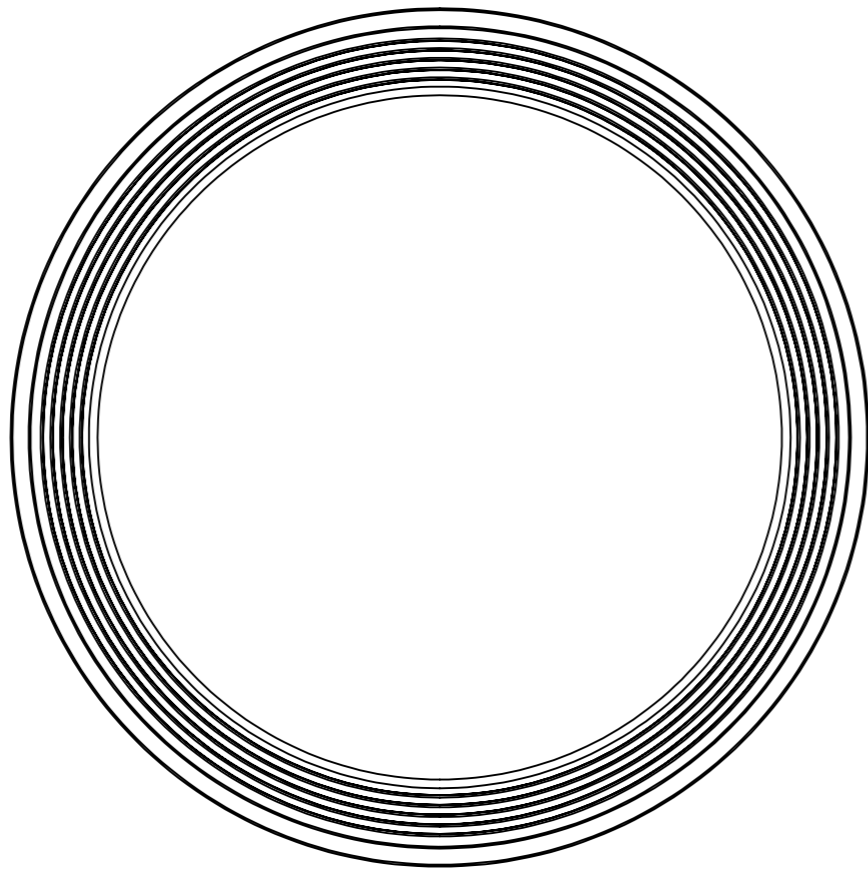


SECTION A-A
SCALE 1 : 20

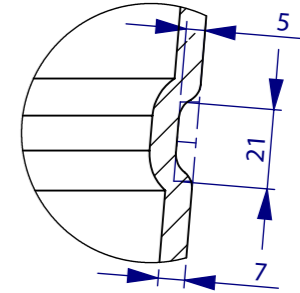


DETAIL B
SCALE 1 : 2

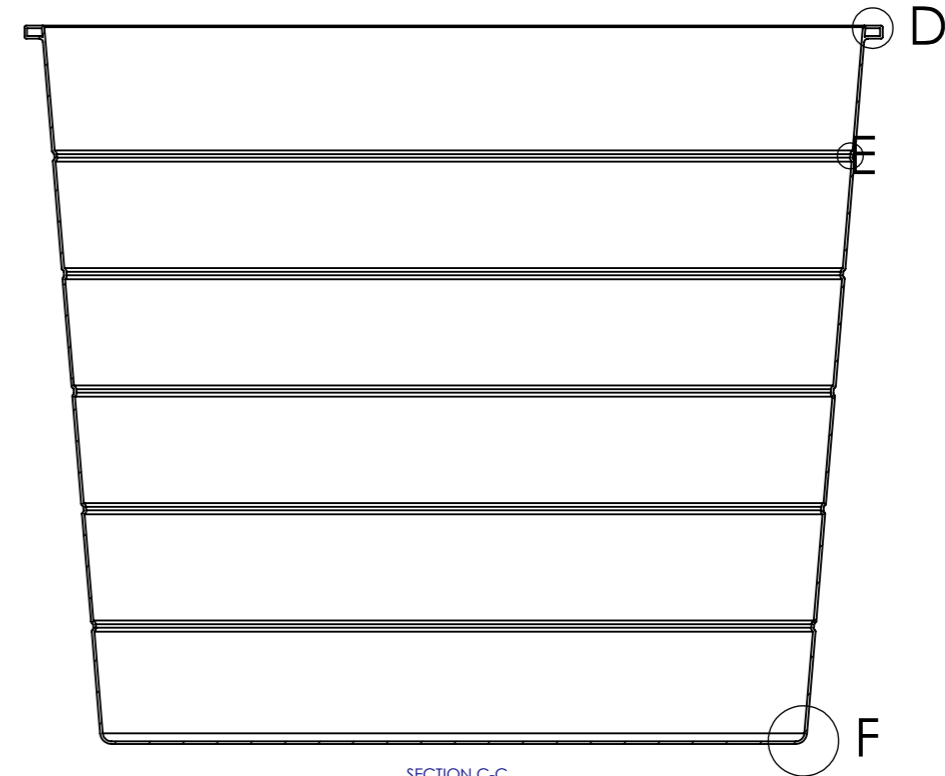
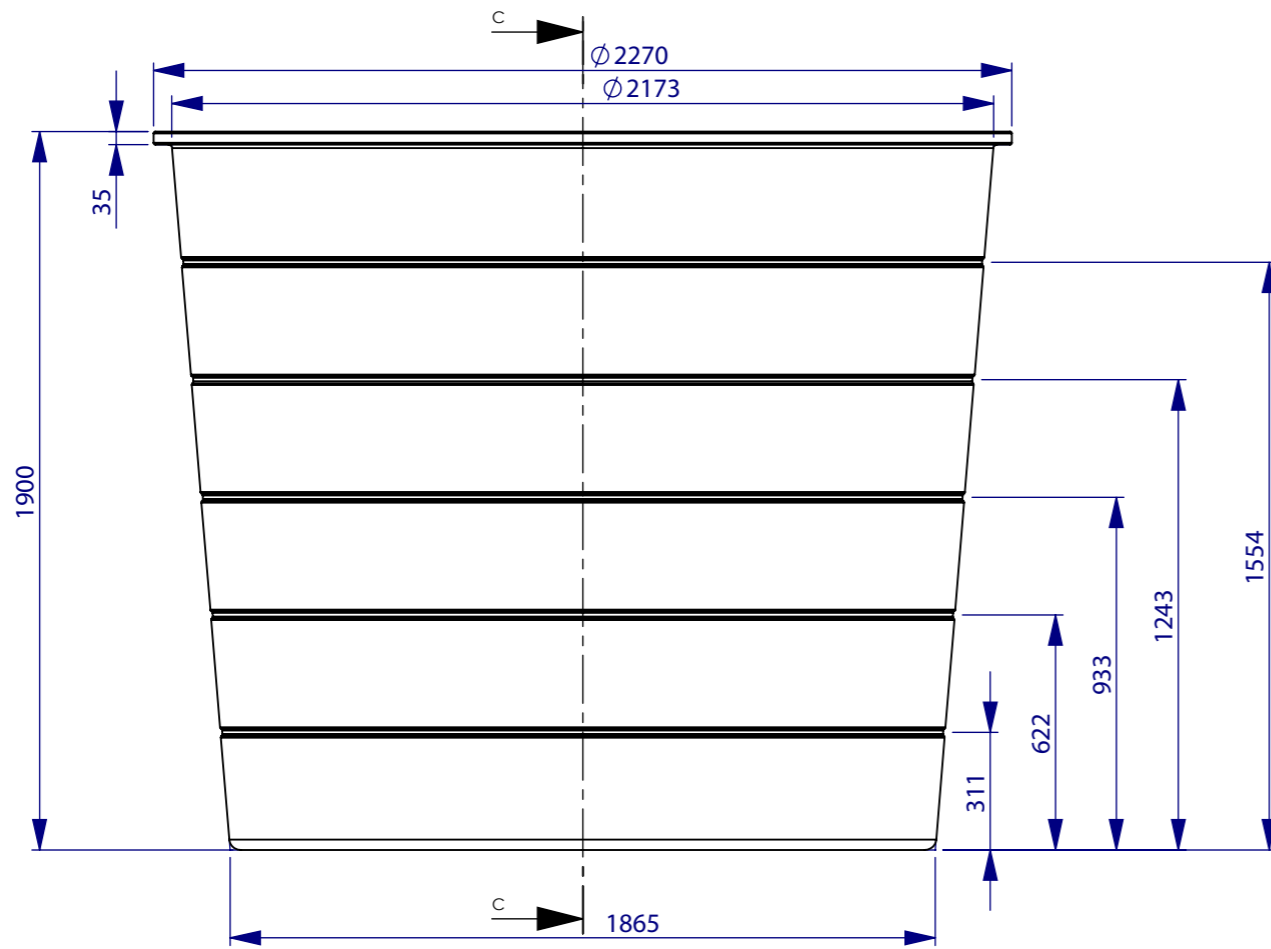
| | | | | | | | | | | |
|------|-----------------|------------|---|-------------------|----------------------------------|---|---------------------------------|---|---------------|-------------|
| | | | APPROVED FOR PRODUCTION: | | | FORMWORKS DESIGN LTD. PO BOX 305 076, TRITON PLAZA, ALBANY, AUCKLAND. | | PH: +64 9 358 0026 FAX: +64 9 358 0027 | | |
| | | | TESTED: | | | TOLERANCES: UNLESS OTHERWISE SPECIFIED | | TITLE: | | |
| | | | PROTOTYPE: | | | 0.01mm ± 0.005mm 100.0mm ± 0.2mm | | Rotaform 6000L Ribbed Watertank Nested - PR1 | | |
| | | | DATE: | CLIENT SIGNATURE: | 0.1mm ± 0.01mm 1,000.0mm ± 0.5mm | | MATERIAL: - | | | |
| | | | | | 1.0mm ± 0.1mm 10,000.0mm ± 1.0mm | | COLOUR: - | | | |
| | | | | | 10.0mm ± 0.1mm ANGULAR ± 0.5° | | FINISH: - | | | |
| PR1 | Initial Release | 2011-05-13 | FORMWORKS DESIGN LTD. STRONGLY RECOMMENDS THE PROTOTYPING AND TESTING OF ALL PRODUCTS PRIOR TO THE COMMISSIONING OF ANY 'TOOLING' OR 'PRODUCTION'. SHOULD THE CLIENT CHOOSE TO FOREGO THE ASSOCIATED COSTS OF 'PROTOTYPING' AND 'TESTING', THEN FORMWORKS ACCEPTS NO RESPONSIBILITY FOR ANY FUTURE COSTS OF MODIFYING TOOLING OR ASSOCIATED COSTS DUE TO PRODUCT FAILURE. THIS DRAWING AND ANY ASSOCIATED DRAWINGS SHOULD BE 'SIGNED' AND 'DATED' BY THE CLIENT AT THE VARIOUS STAGES DETAILED ABOVE, PRIOR TO THE COMMENCEMENT OF 'TOOLING' AND OR 'PRODUCTION'. | | | DRAWING DATE: 18/05/2011 | PROJECT: 6000L Ribbed Watertank | PART NO. | SHEET: 2 OF 3 | SCALE: 1:50 |
| REV: | DESCRIPTION: | DATE: | CHECKED: | | | DO NOT SCALE DRAWING ALL DIMENSIONS IN MILLIMETERS | DRAWN: Formworks | DWG NO. R-6000L_WT-0101 | FORMAT: A3 | |



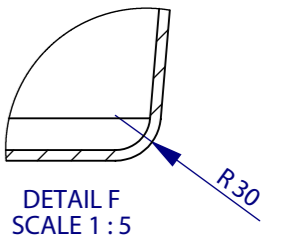
DETAIL D
SCALE 1 : 2



DETAIL E
SCALE 1 : 2



SECTION C-C
SCALE 1 : 20



DETAIL F
SCALE 1 : 5

| | | | | | | | |
|------|-----------------|---|----------|--|--|---------------------------------|--|
| | | APPROVED FOR PRODUCTION: | | FORMWORKS DESIGN LTD. PO BOX 305 076, TRITON PLAZA, ALBANY, AUCKLAND. PH: +64 9 358 0026 FAX: +64 9 358 0027 | | TITLE: | |
| | | TESTED: | | TOLERANCES: UNLESS OTHERWISE SPECIFIED | | MATERIAL: - | |
| | | PROTOTYPE: | | 0.01mm ± 0.005mm 100.0mm ± 0.2mm | | COLOUR: - | |
| | | DATE: | | 0.1mm ± 0.01mm 1,000.0mm ± 0.5mm | | FINISH: - | |
| | | CLIENT SIGNATURE: | | 1.0mm ± 0.1mm 10,000.0mm ± 1.0mm | | PROJECT: 6000L Ribbed Watertank | |
| | | FORMWORKS DESIGN LTD. STRONGLY RECOMMENDS THE PROTOTYPING AND TESTING OF ALL PRODUCTS PRIOR TO THE COMMISSIONING OF ANY 'TOOLING' OR 'PRODUCTION'. SHOULD THE CLIENT CHOOSE TO FOREGO THE ASSOCIATED COSTS OF 'PROTOTYPING' AND 'TESTING', THEN FORMWORKS ACCEPTS NO RESPONSIBILITY FOR ANY FUTURE COSTS OF MODIFYING TOOLING OR ASSOCIATED COSTS DUE TO PRODUCT FAILURE. THIS DRAWING AND ANY ASSOCIATED DRAWINGS SHOULD BE 'SIGNED' AND 'DATED' BY THE CLIENT AT THE VARIOUS STAGES DETAILED ABOVE, PRIOR TO THE COMMENCEMENT OF 'TOOLING' AND OR 'PRODUCTION'. | | 10.0mm ± 0.1mm ANGULAR ± 0.5° | | DRAWN: Formworks | |
| PR1 | Initial Release | 2011-05-13 | | DRAWING DATE: 18/05/2011 | | PART NO. | |
| REV: | DESCRIPTION: | DATE: | CHECKED: | DO NOT SCALE DRAWING ALL DIMENSIONS IN MILLIMETERS | | DWG NO. R-6000L_WT-0001 | |
| | | | | | | SHEET: 3 OF 3 | |
| | | | | | | SCALE: 1:50 | |
| | | | | | | FORMAT: A3 | |

Rotaform
6000L Ribbed Watertank - PR1